



LEO

TRADING

— EST2002 —

COMPANY
PROFILE

Industry Overview

Maldives consists of more than 1000 tropical islands scattered across the Indian Ocean. 200 of these islands are inhabited and over 100 are resort islands, with the list of resort islands increasing almost every year. As the islands are scattered across various atolls over a wide geographical area, transportation and delivery of physical items, especially heavy industrial items, were a logistical nightmare for a long time. For the Government and local businessmen, it was a huge challenge in terms of economic and infrastructural development, and business growth. With a vision to see the challenge resolved for everyone, Mr Abdulla Sawad founded Leo Trading Pvt. Ltd and began operations in 2002, quickly growing the company and establishing it as the leading construction and logistics company in the Maldives within a few years.

Company History

The company initially started as a trading company - mostly wholesale - in Male', the Capital City of Maldives concentrating on FMCGs and industrial consumables. As the market for FMCGs were hectic and intense, Mr Sawad strategically aligned the company's direction to industrialised goods and services. It was the right move and best fit for the company.

Today, Leo Trading is the biggest and most widely known logistics company in the Maldives responsible for the movement over 80% of almost all the physical/industrial goods between the point of origin to the point of consumption to meet the requirements of the customers.

The key expert areas of Leo includes: Leasing of Heavy Construction Equipment,

Shipment Clearance, Cargo Clearance, Discharging Shipments, Excavating, Back Filing & Compacting, Constructing Underwater Pipeline and Sewerage System and the likes.

To date, there are over 600 employees working in 6 industrial locations, namely Male' City, Hulhumale, Thilafushi, Laamu, Fuvahmulah and Addu City. Leo operates a fleet of over 100 different vehicles both on land and sea including dhonis, barge, landing craft, tug boats, speed boats, excavators, cranes, forklift, tractors, bob cats, buses and vans, etc. Heavy industrial machineries include generators, hydraulic hammers, sand pump, refer and accommodation containers, RO plants, lighting towers and so on.

VALUES

The philosophical stance of Leo Trading is to maintain a sound ethical harmony in all its business streams.



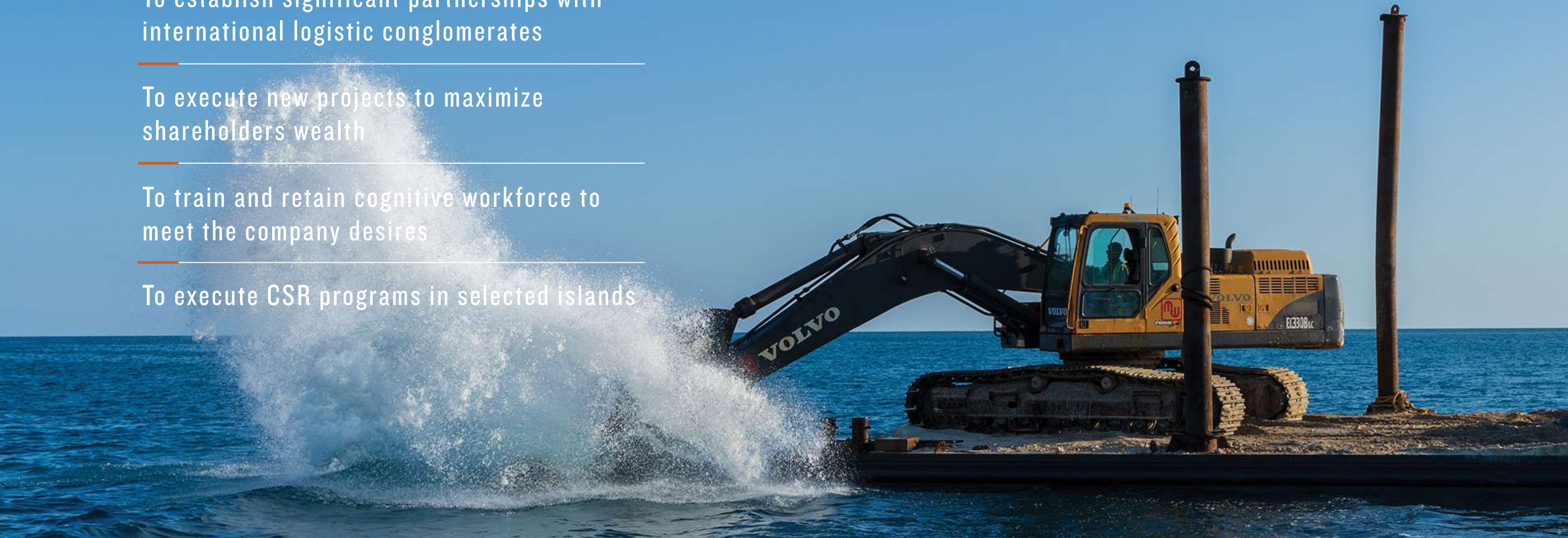
MISSION

To establish significant partnerships with international logistic conglomerates

To execute new projects to maximize shareholders wealth

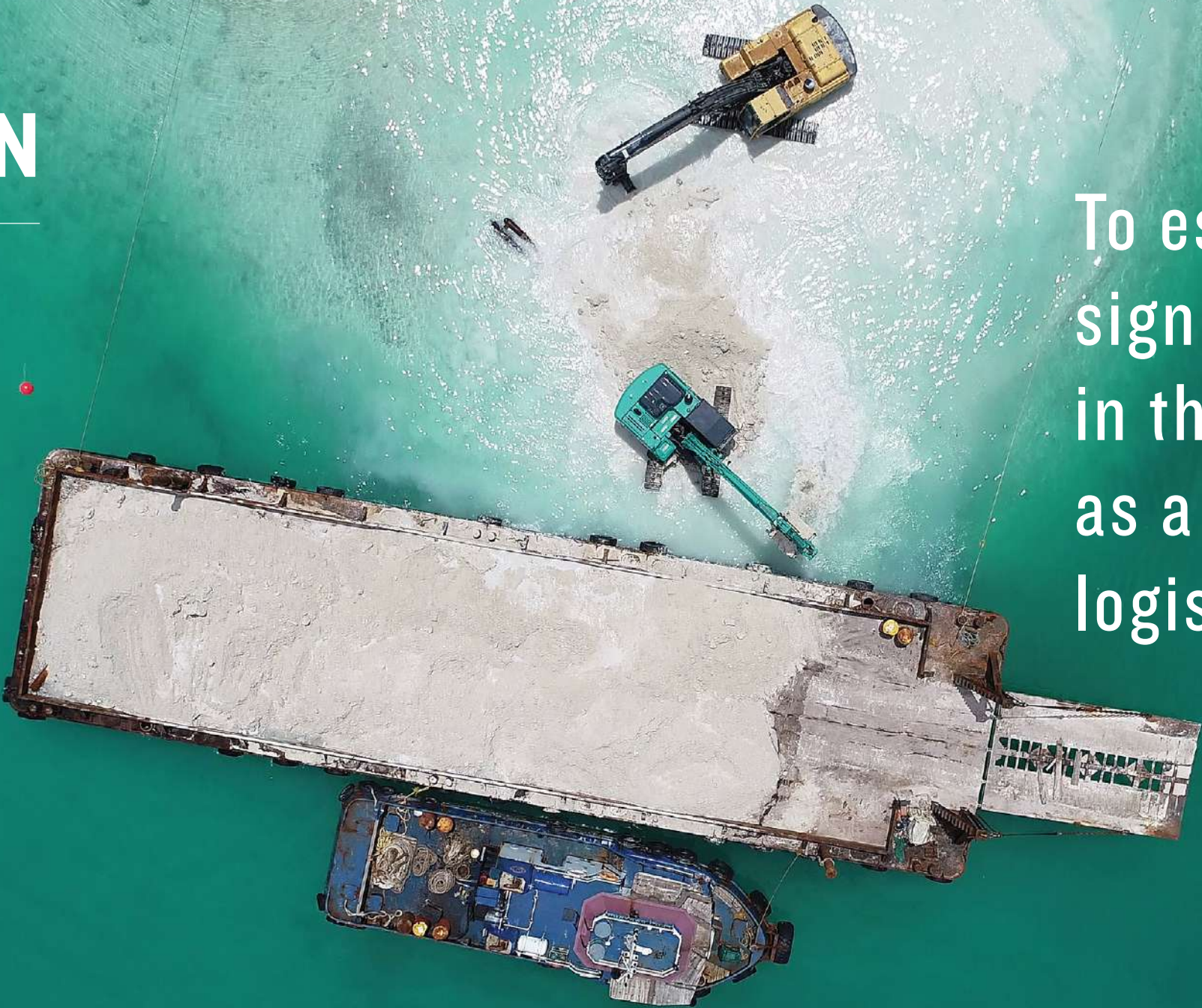
To train and retain cognitive workforce to meet the company desires

To execute CSR programs in selected islands



VISION

To establish a significant presence in the Asian Region as a dominant logistics company



CUSTOMS BROKER SERVICE

Leo Trading's subsidiary company, Leo Shuttle Pvt Ltd is a licensed broker company. The company's experienced and knowledgeable team works around the clock to give the best service to its customers all around Maldives.



CARGO CLEARANCE

With a highly experienced team, we provide shipment clearance services for all kinds of cargo. In the past we have handled various notable projects exclusively for our clients. Our list of notable customers includes Shangri La, Sanken Overseas (Multiple Resort Projects), Shin Nippon (Multiple Resort Projects), JC Logistics (CSCEC 7000 housing Project), Metallurgical Corporation of China Ltd, Mohan Mutha Exports, ELS International (Multiple Resort Projects), Sri Kirthika International, Poralu Marine (Crossroads Marina Project), and Pearl Atoll.



SEA TRANSPORTATION

Leo Trading owns various different types of vessels that enables us to easily handle every type of local and regional transport network project. Our constantly growing fleet currently includes cargo dhonies (Local Cargo Boats), landing crafts (250MT – 1000MT), barges (80ft – 230ft), tug boats, speed boats, ferry boats, and reefer containers for perishables.



LAND TRANSPORTATION

Leo Trading can proudly claim to own the largest fleet of land vehicles in Maldives. The varied list of land vehicles used for our various projects includes trailers (40ft/40Mt and 40ft/120Mt), lowbed trailers (30ft/40Mt), side loaders (for container transportation), prime movers, dump trucks (15Mt – 40Mt), boom trucks, tractors, lorries, and more.



STEVEDORING AND HANDLING BULK SHIPMENT

As one of the most experienced and well-known stevedores in the country, we use the latest machinery and equipment to ensure the most efficient loading and unloading times of cargo to and from ships, regardless of size, form, or container.



HEAVY LIFTING

Leo Trading handles almost 90% of heavy cargo transport locally in Maldives, including the transport of generators to remote islands and to designated sites on land. Some of the equipment used for these projects include: Kobelco CK1350 (135-Ton Crawler Crane), Kobelco BM700 (70-Ton Crawler Crane), Multi-excel Trailer (120Mt Capacity), Kobelco 7035 (35-Ton Crawler Crane), rough terrain cranes (25MT – 50MT), and hydraulic jacks (50Mt – 200Mt).



RESCUE AND SALVAGE

As the largest logistics company in the country, a large part of our daily operations includes rescue and salvage. With the heaviest equipment and vessels capable of handling any terrain in Maldives, we are the first, and sometimes only choice, for any rescue or salvage operation in Maldives.



EXCAVATION AND DREDGING

We provide heavy machinery necessary for excavating, backfilling and compacting required for construction and foundation works. With a fleet of more than 50 excavators ranging from mini-excavators to the gigantic SK480, we are the most reliable company providing such services in Maldives. In addition, we have high-bed excavators, and spud barges, operated by the most experienced personnel in their respective fields in the country. We're also fully equipped to provide and operate the machinery required for the construction of underwater pipelines and sewerage systems.



DEMOLITION AND GARBAGE DISPOSAL

Demolition and garbage disposal operations are one of the most difficult services we provide as protection of the country's fragile environment during these operations are of the utmost importance. Leo Trading utilizes the safest and most suitable equipment for such tasks. Spud barges for working in shallow water is one of the most useful equipment for water-villa reconstruction projects. Moreover, excavators with jackhammers operated by skillful operators and supervisors make us the perfect team for the job. Using our own landing crafts, barges, and tug boats, disposal of garbage in the safest and most economical way is a simple matter. One of our largest such projects includes demolition of the Pier Bridge building at Velana International Airport's new terminal construction area.



STORE AND MATERIAL SUPPLY

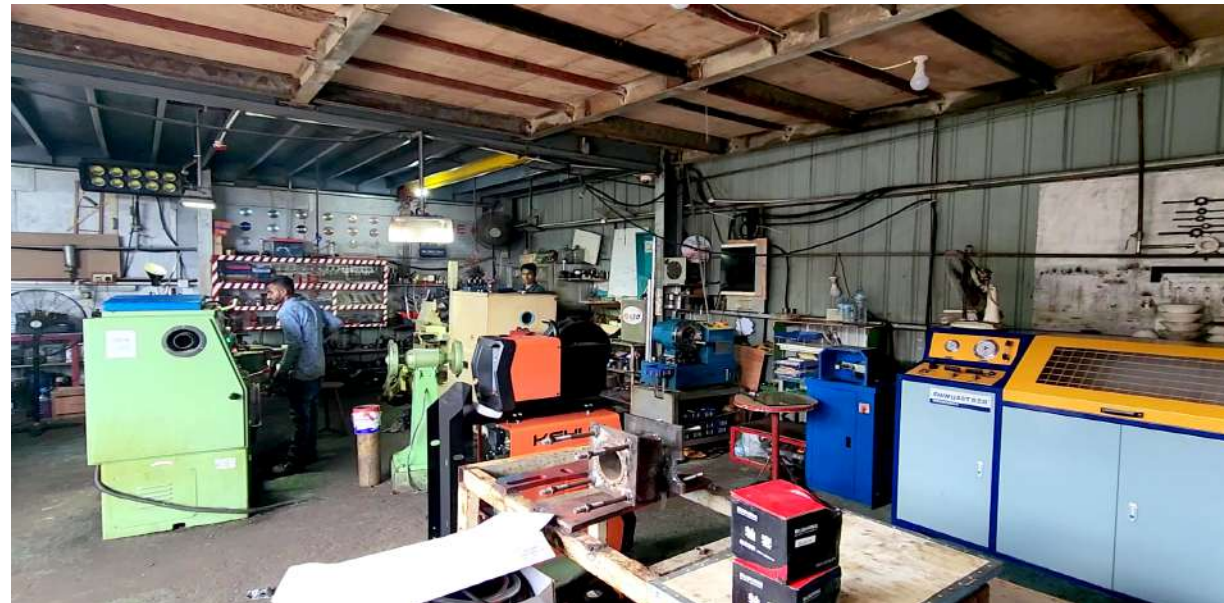
Leo Trading has the best and widest range of construction, marine, hardware, heavy vehicle equipment, welding equipment, etc.

Leo Trading constantly strive to source materials that are suited to the unique environmental conditions of Maldives and focus on products that have the least environmental impact. Our products are regularly restocked to ensure that clients' projects are never interrupted due to material shortage.



ENGINEERING

Leo Trading's workshop is equipped with the latest machineries and equipment, manned by highly-skilled staff experienced in the repair and maintenance of diesel engines, hydraulic, and electrical systems. The workshop also provides lathing, milling, boring, drilling, and welding services.



EQUIPMENT RENTAL - LAND



EXCAVATOR



BACKHOE
LOADER



FORKLIFT



CRANE
LORRY



TRAILER
TRUCK



TRACTOR



SKID
LOADER



BUS



DUMP
TRUCK



LORRY



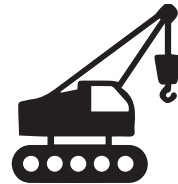
CRANE
MOBILE



DOUBLE
CAB



WHEEL
LOADER



CRANE
CRAWLER



MINI
EXCAVATOR



VAN



PRIME
MOVER



ROLLER
COMPACTOR



PILING
MACHINE



EXCAVATOR
HIGH BED



TELESCOPIC
FORKLIFT



TANKER
TRUCK



SIDE
LOADER



BOOM
LIFT



BULLDOZER

EQUIPMENT RENTAL

SEA



SPEED
BOAT



CARGO
DHONI



SUPPLY
DHONI



FERRY
DHONI



LANDING
CRAFT



BARGE



TUG
BOAT

OTHER



GENERATOR



REEFER
CONTAINER



HYDRAULIC
HAMMER



CONCRETE
MIXTURE



CONCRETE
PUMP



GRABBER



MARINE
AIRBAG



AIR
COMPRESSOR

CLIENTS



MALDIVES

Local Government companies
Resorts
Private Companies



SINGAPORE

Lian Beng Group
Shenhua Construction
Succinite Resources



UAE

National Marine Dredging Company
Earth Moving Worldwide



SRI LANKA

Sanken Overseas
Sierra Construction
Shin Nippon Lanka
Freight Links International



FRANCE

Poralu Marine



NETHERLANDS

Boskalis
Van Oord



KSA

Saudi Binladin Group



MAURITIUS

Hooloomann & Associates



INDIA

GMR
Mohan Mutha Exports
Lift and Shift India
Sri Kirthika International
Hari International
Afcon Infrastructure
JMC Projects



JAPAN

Taisei Corporation
Japan Agency for Marine-Earth Science
and Technology



CHINA

China Harbour Engineering Company
China State Construction Engineering Corporation
CCCC Second Harbour Engineering Co
Beijing Urban Construction Group
China Machinery Engineering Corporation
JCTrans Logistics

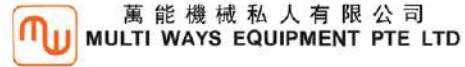
PARTNERS



MALDIVES



SINGAPORE



SRI LANKA

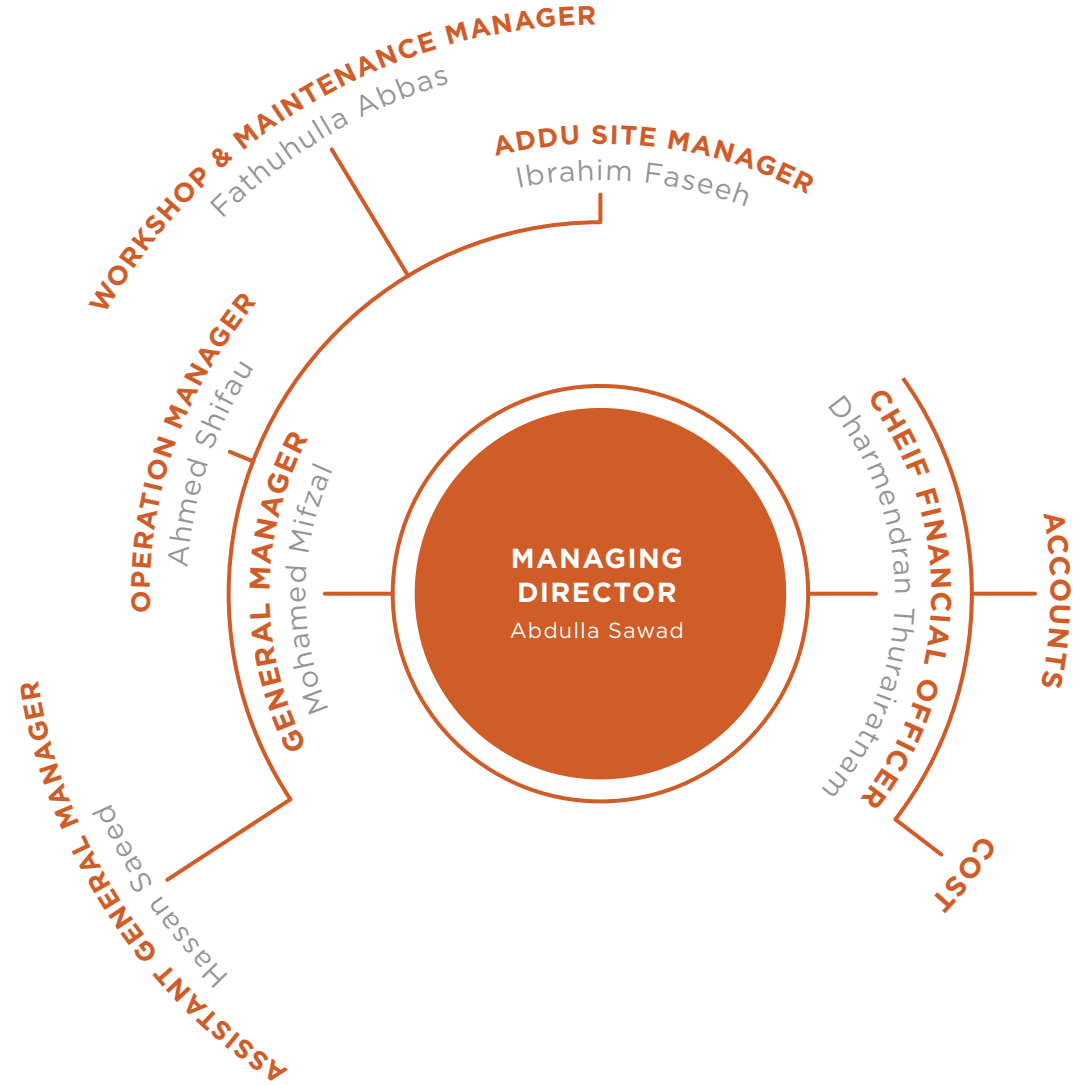


BRANDS



MANAGEMENT AND TEAM

Construed as a leadership management style, the organisation is hierarchically aligned as following. Fundamentally, the management is divided into two departments headed by the General Manager and CFO. The General Manager oversees technical divisions which is further departmentalized into four sub-divisions including the operational sites in various atolls. The CFO, considered as a key significant role, oversees financial two divisions.



MANAGEMENT & TEAM



ABDULLA SAWAD

Managing Director

He is the founder of the company and the pioneer with the vision to make Leo Trading Pvt. Ltd, into the logistics giant it is today. From humble beginnings, he has turned the company into one of the biggest success stories in the country. The company he founded in 2002 has been flourishing under his leadership and has become renowned for its efficiency and quality service.



MIFZAL MOHAMED

General Manager

Under the direct guidance of the Directors he is in charge of all employees, organizing and maintaining, with a keen eye on perfection, and supervision of all the aspect of the company. He is also very experienced in IT and has been working in an administrative position with the company for two years.



DHARMENDRAN THURAIRATNAM

CFO



HASSAN SAEED

Assistant General Manager



AHMED SHIFAU

Operation Manager



FATHUHULLA ABBAS

Workshop & Maintenance Manager



IBRAHIM FASEEH

Addu Site Manager

Divisions and Subsidiary Units



Male'

Custom Broker
Clearance

N. Bomasdhoo

Operational Centre

Thilafushi

Supplies and Store
Operational Centre
Logistic Hub
Mechanical
Workshop
Dockyard

Hulhumale'

Head Office
Warehouse,
Logistical Service Centre
Heavy Machinery Rental

Ga. Nilandhoo

Logistics Operational
Centre

Addu City

Bus Service,
Speedboat Service,
Logistics Service,
Heavy Machinery
Rental

K. Himmafushi

Logistics Operational Centre
Warehouse

AWARDS & ACCOLADES

- HDC's Contrator for Development and Operation of Heavy Vehicle
- Rental Service in Hulhumale
- Gold 100 awards winner 2017, 2018 & 2019, 2020 - 2022-2023
- Local Logistics Contractor for 7000 housing Unit Project in Hulhumale
- Local Logistic Contractor for VIA Terminal Expansion Project
- Local Logistics and Heavy Equipment Provider for MCC13
- The Sub contractor and Local Logistic service provider for Shin Nippon Air Technologies, Japan.
- Local Logistics provider for Succinite resources Singapore
- SAARC Summit -2011 Maldives, Material Supply & clearance Logistics Service.
- Authorized Cargo Handling for Sanken Overseas Maldives Pvt Ltd'
- Official contractor for all logistics and machinery providing for 1500 housing project of CMEC in Maldives. (Hulhumale, GA. Villingili, GDH. Gadhdhu, GN. Fuvamulah)
- Logistics, ferry and bus service contractor for Addu Investment Pvt Ltd (Shangri La's Villingili Resort and Spa)



CONTACT

HEAD OFFICE

Leo Trading Pvt Ltd

3rd Floor, Leo Office Complex,
Hulhumale Plot 10693 (M3-60),
Haivakaru Magu,
Male', Republic of Maldives.
Tel: +960 3006638
Fax: +960 3340780

Admin Officer
+960 9555883
admin@leotrading

Accounts
+960 9885385
accounts@leotrading.mv

Purchasing
+960 9555752
purchasing@leotrading.mv

Customs Broker
customs.broker@leotrading.mv

General Manager

Mr. Mifzal Mohamed
+960 7985385
mifzal@leotrading.mv

Thilafushi Site Manager

Mr. Fathuhulla Abbas
+960 9555385
store@leotrading.mv

Addu (Leo Shuttle) Manager

Mr. Ibrahim Faseeh
+960 7714814
shuttle@leotrading.mv

Hulhumale Site Manager

Mr. Ahmed Shifau
+960 7975385
shifa@leotrading.mv



www.leotrading.mv